



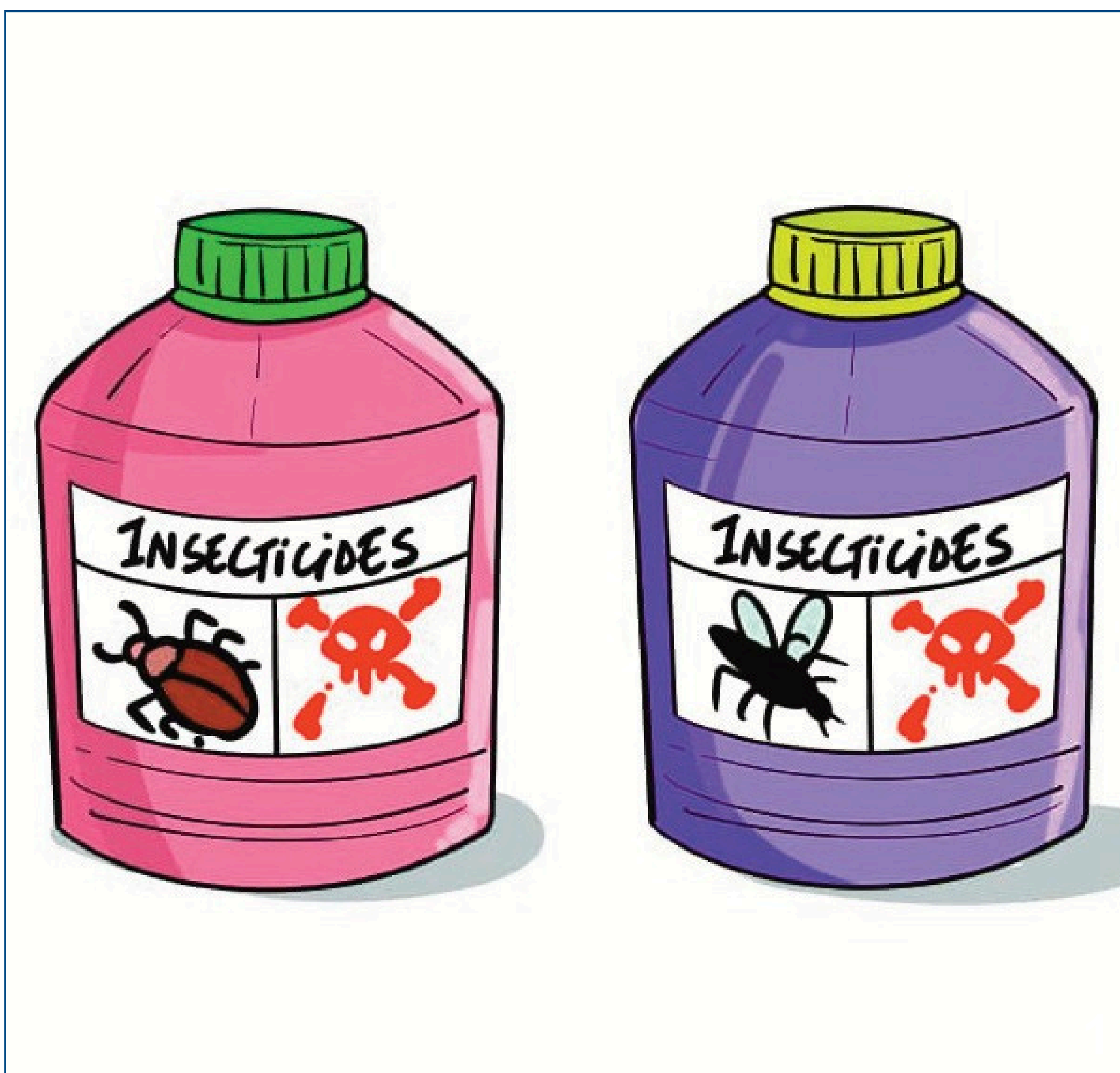
International
COCOA
Initiative

PROTECTING CHILDREN FROM EXPOSURE TO PESTICIDES



Posters for training adult labour groups

Common pesticides used in cocoa



Insecticides



Herbicides (control of weeds)

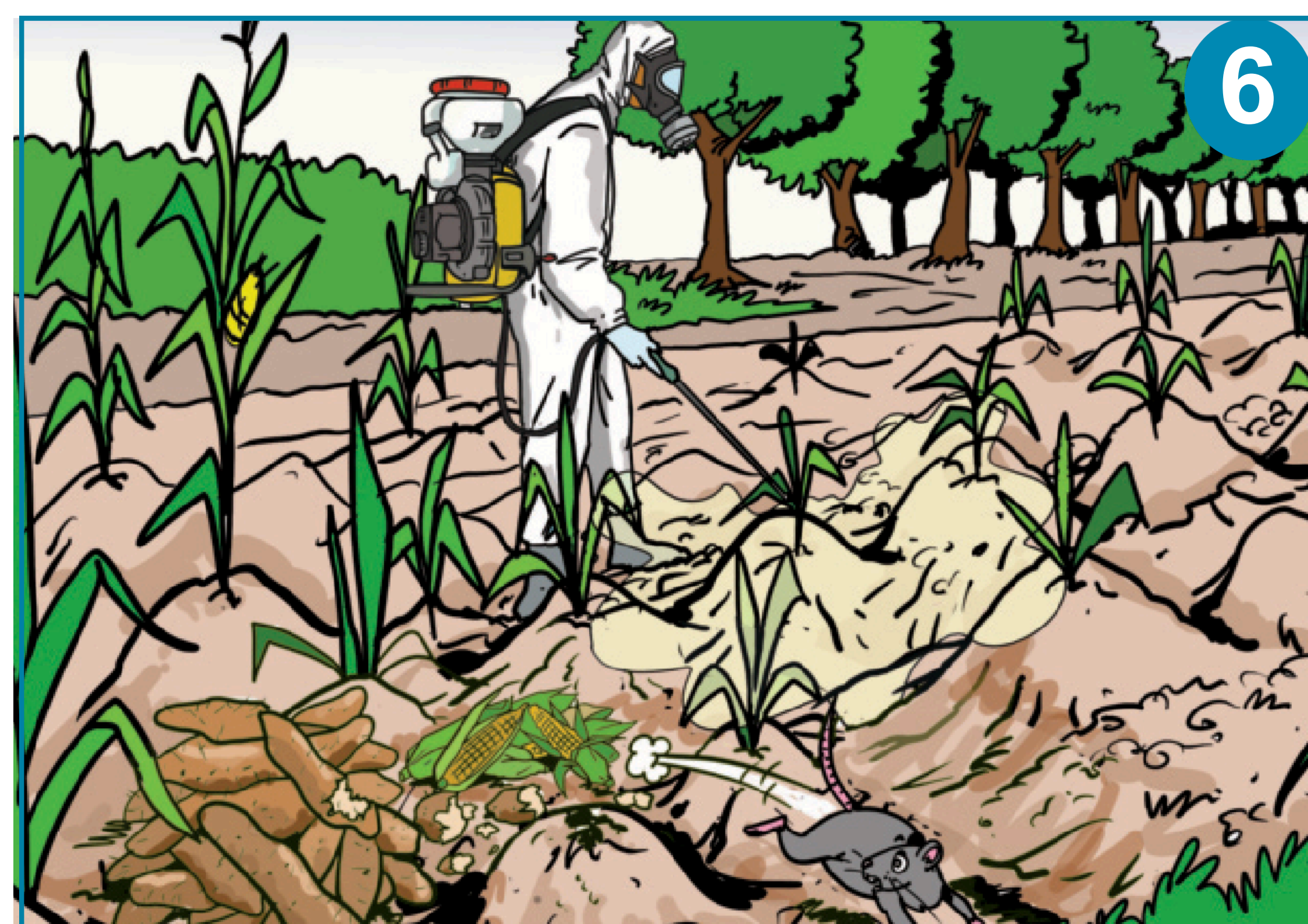


Fungicides (pathogens)



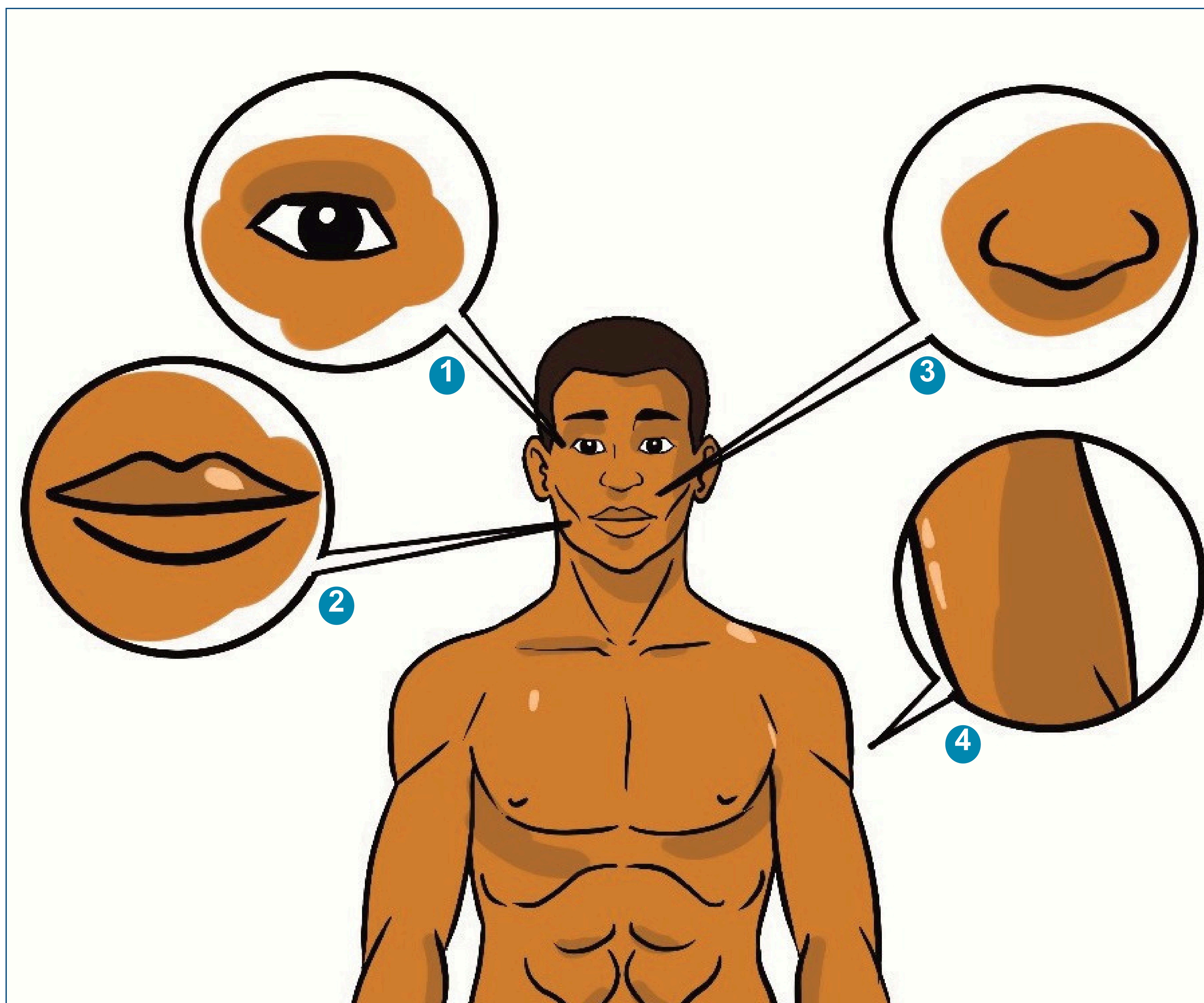
Rodenticides (mice and rats)

Different uses of pesticides



1. **Managing agricultural pests**, including protecting crops from pests and weeds
2. **Protecting livestock**, including combating animal diseases
3. **Urban pest management**, including controlling infestations in households and communities
4. **Forestry**, including protecting trees against pests
5. **Crisis management**, including addressing epidemics
6. **Protecting farms after harvest**

How pesticides enter the human body



1. Eyes
2. Ingestion
3. Inhalation
4. Cutaneous

Different hazard warning pictograms



GHS01 Explosive



- Explosives
- Self-Reactives
- Organic Peroxides



GHS05 Corrosive



- Skin Corrosion/
Burns
- Eye Damage
- Corrosive to Metals



GHS04 Compressed Gas

- Gases Under Pressure



GHS08 Health Hazard

- Carcinogen
- Mutagenicity
- Reproductive Toxicity
- Respiratory Sensitizer
- Target Organ Toxicity
- Aspiration Toxicity



GHS07 Harmful

- Irritant (skin and eye)
- Skin Sensitizer
- Acute Toxicity (harmful)
- Narcotic Effects
- Respiratory Tract Irritant
- Hazardous to Ozone Layer (Non-Mandatory)



GHS03 Oxidizing



- Oxidizers



GHS02 Flammable



- Flammables
- Pyrophorics
- Self-Heating
- Emits Flammable Gas
- Self-Reactives
- Organic Peroxides



GHS06 Toxic



- Acute Toxicity (fatal or toxic)



GHS09 Environmental Hazard



- Aquatic Toxicity

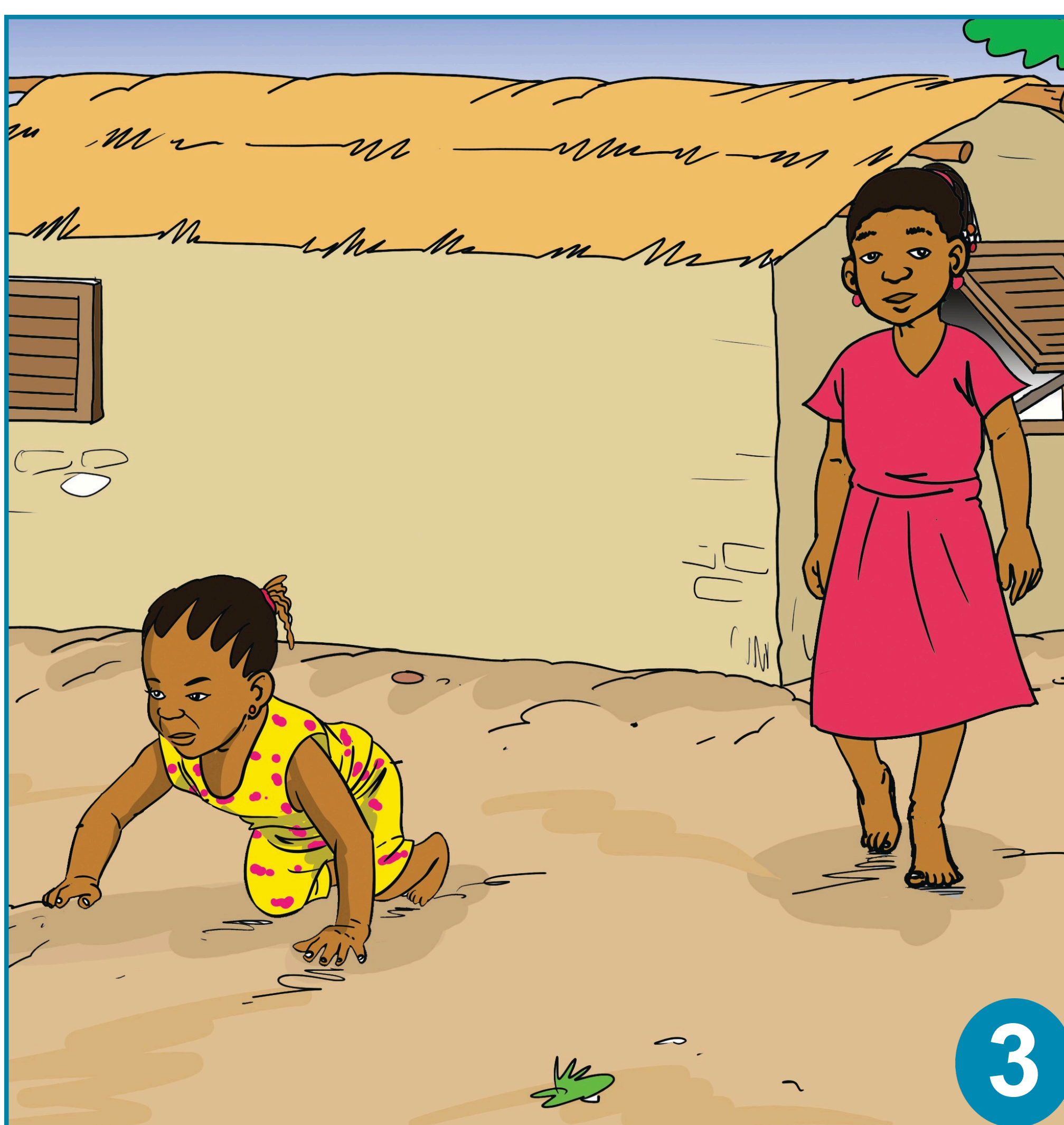
Samples of pesticide labels



- Pesticide name
- Product category
- Active components
- Usage guidelines

- Guidelines for usage
- Caution symbols
- Emergency care instructions

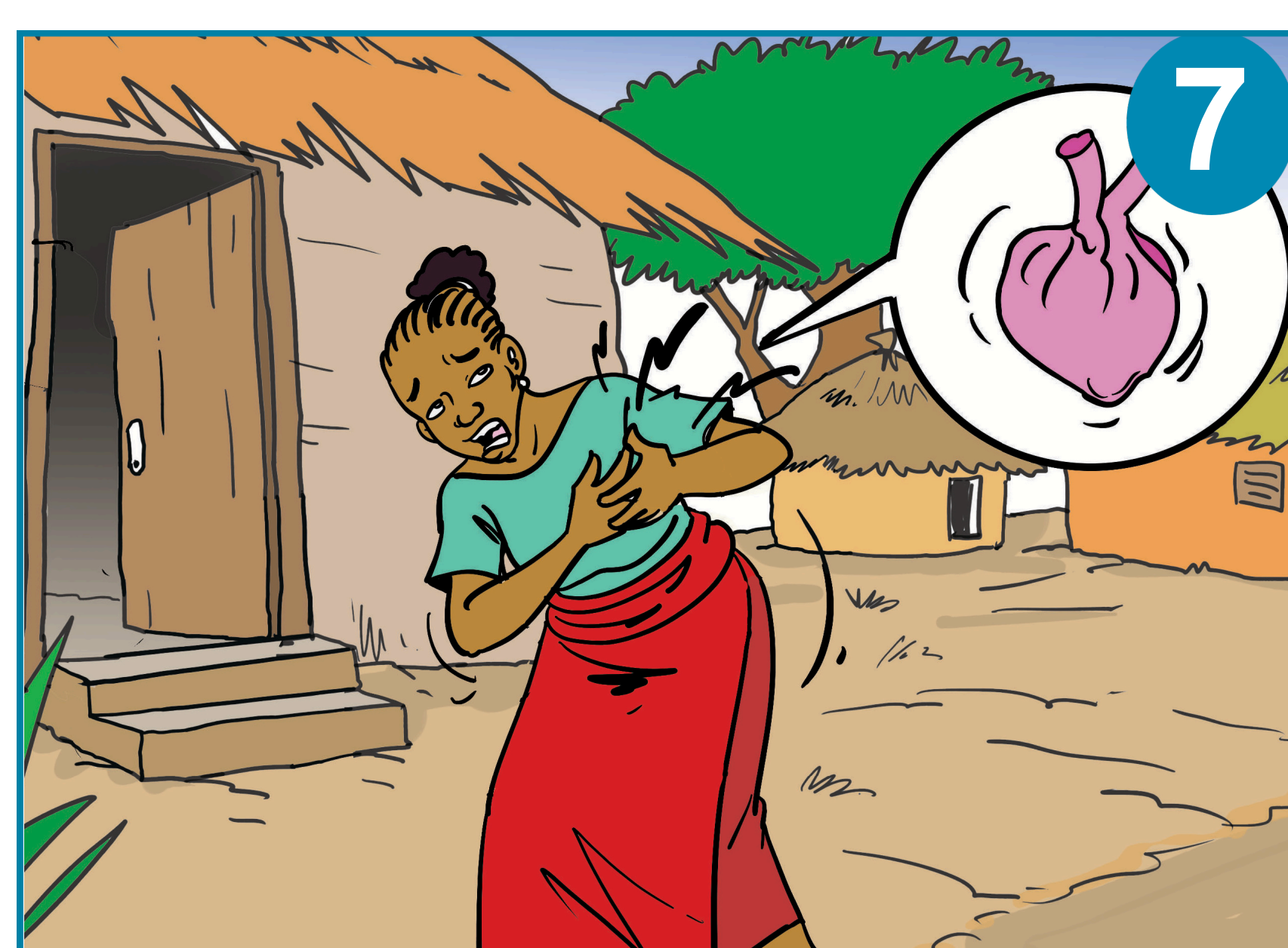
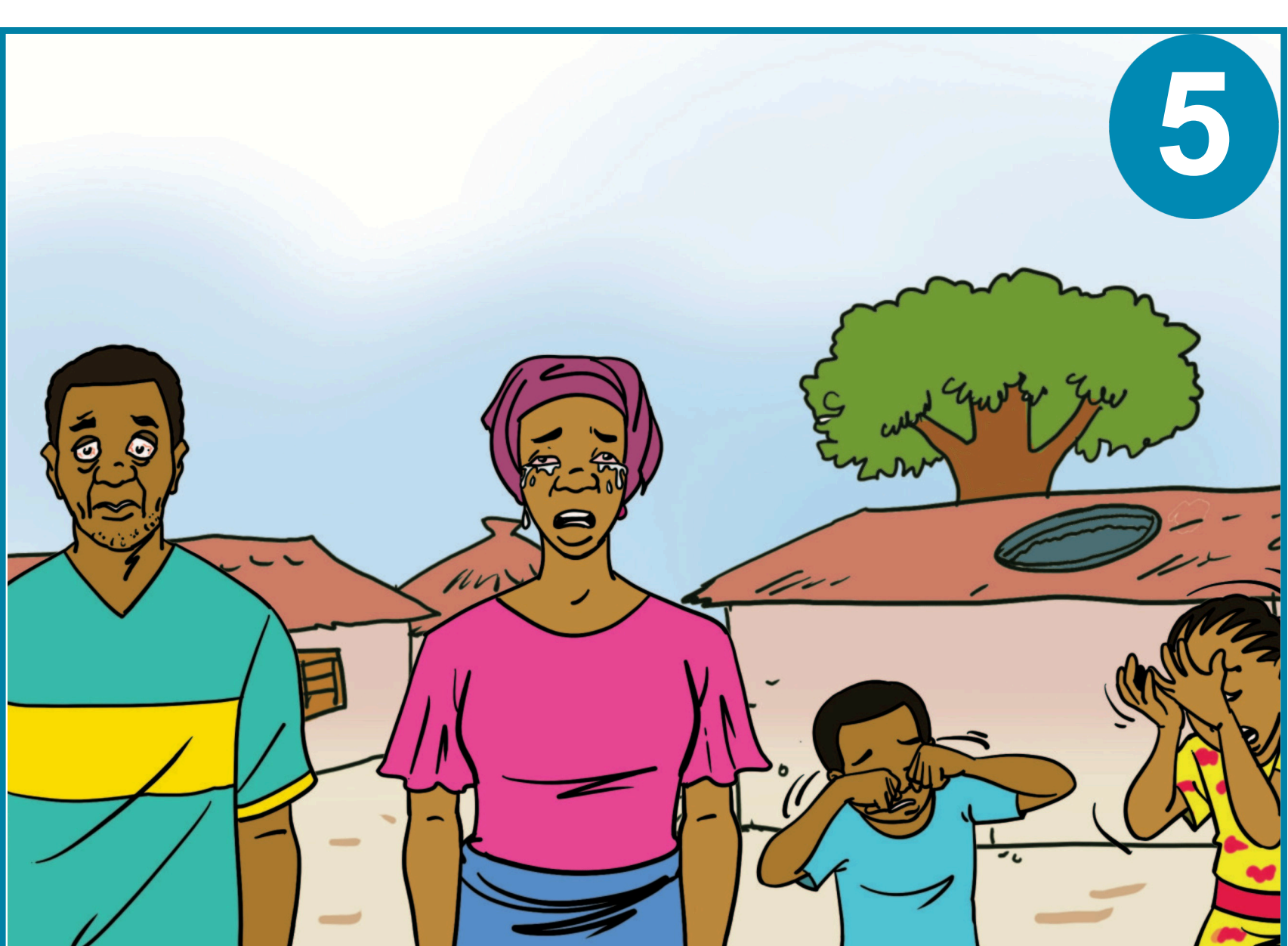
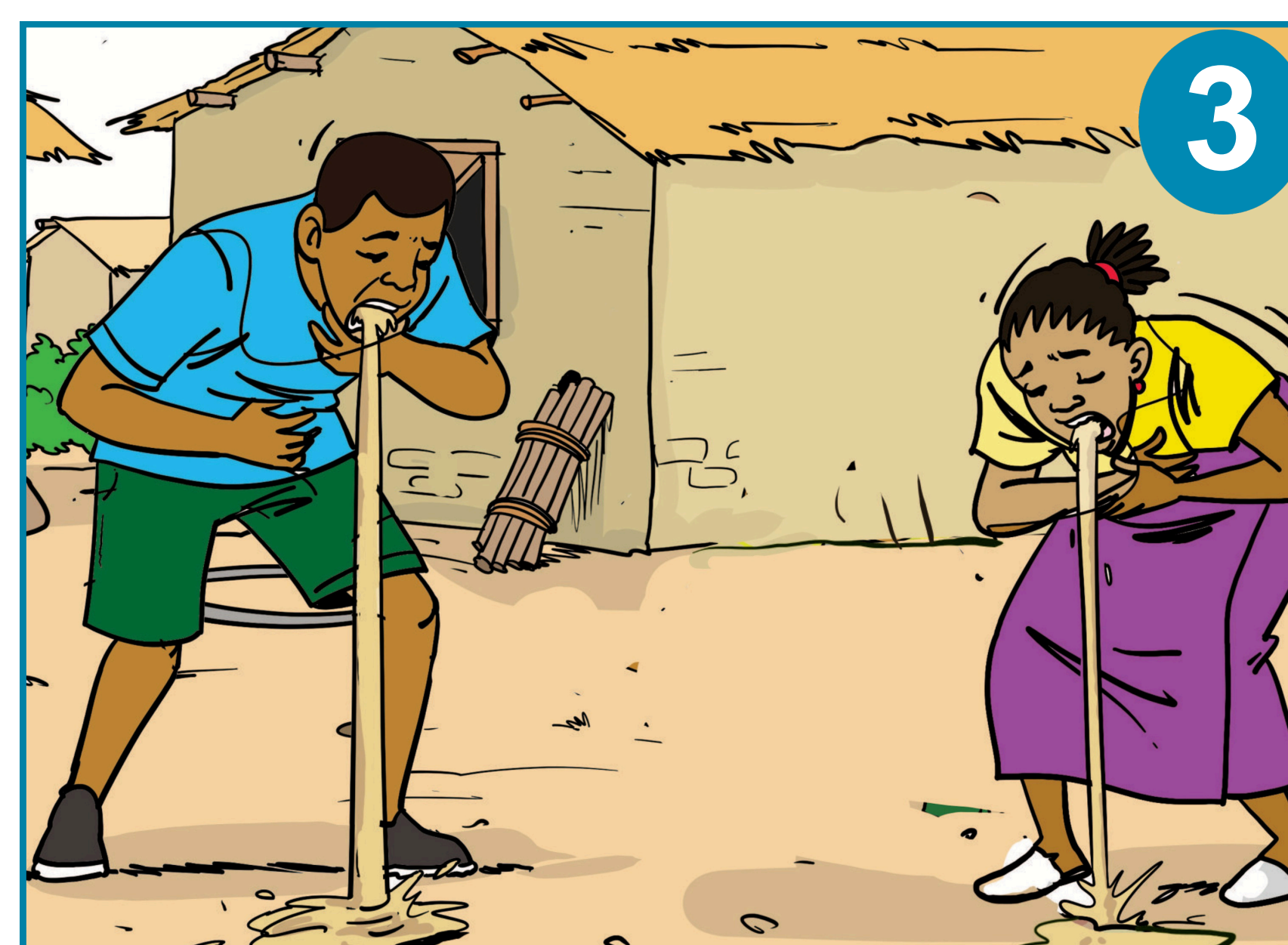
Long-term health effects of pesticide exposure



1. Congenital anomaly;
2. Stunted growth;
3. Developmental lag;
4. Dysfunction of the immune system



Short-term health effects of pesticide exposure



1. Migraine;
2. Lightheadedness or fatigue;
3. Queasiness or emesis;
4. Abdominal pain or loose stools.
5. Eye discomfort or excessive tearing;
6. Respiratory issues, coughing;
7. Abnormal heart rate;
8. Stinging feeling in the mouth, throat, etc.



International
COCOA
Initiative

Responsible use of pesticides



1. Pesticide storage prior to application



2. Prior to application: Pesticide storage in a safe location



3. Prior to spraying: Donning protective gear personal safety



4. Prior to spraying: Preparation of the spray solution



International
COCOA
Initiative

Responsible use of pesticides



5. During the spraying process



6. After application: Designating the area sprayed



7. After spraying, gather the product containers.



International
COCOA
Initiative

This resource was developed by the International Cocoa Initiative and is protected by an Attribution-NonCommercial-Creative Commons license. <https://creativecommons.org/licenses/by-nc/4.0/>

This means you are free to:

- Share — copy and redistribute the material in any medium or format
- Adapt — transform, and build upon the material

Under the following terms:

- Attribution — You must give appropriate credit, provide a link to the license, and indicate if changes were made. You may do so in any reasonable manner, but not in any way that suggests the licensor endorses you or your use.
- NonCommercial — You may not use the material for commercial purposes.