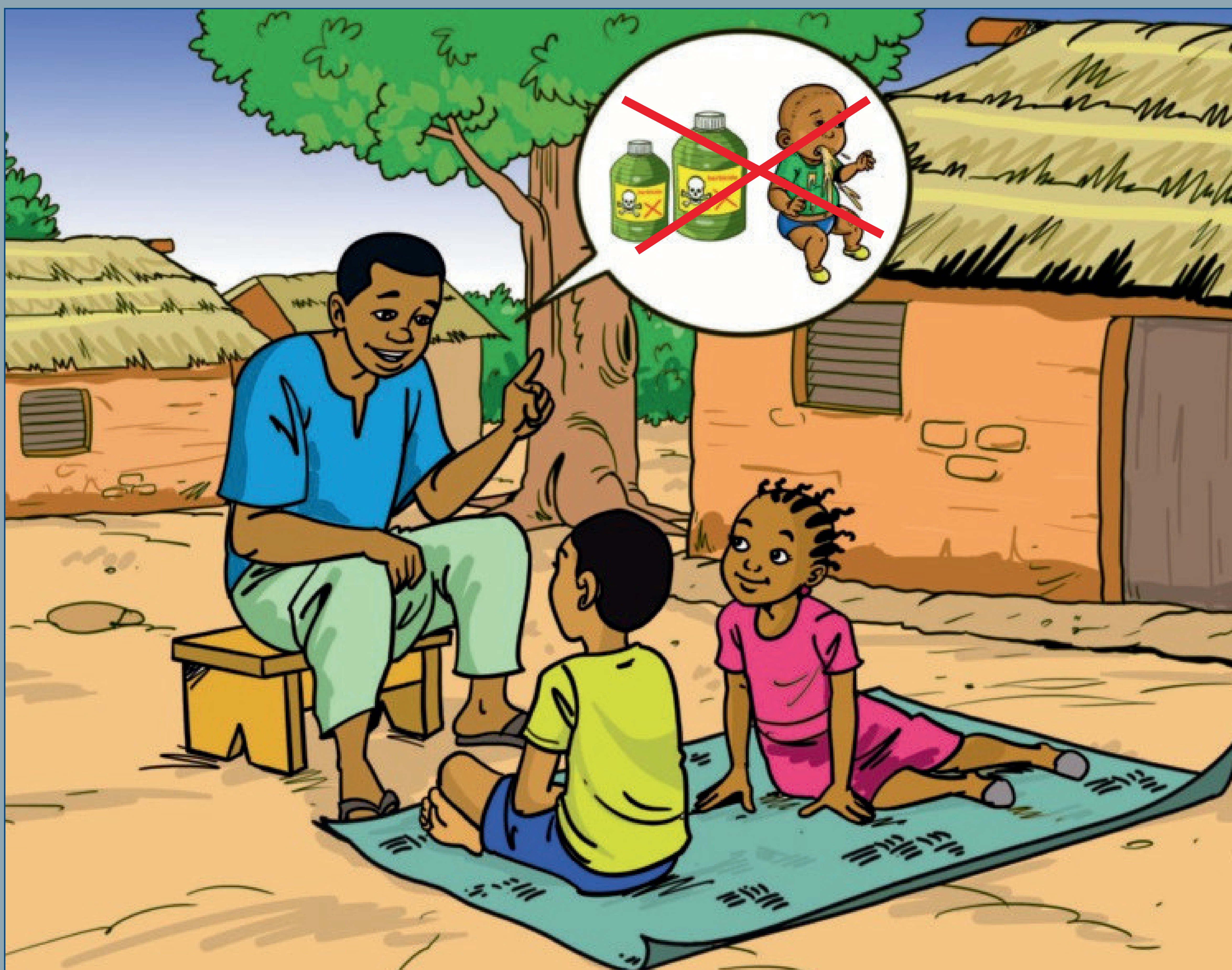




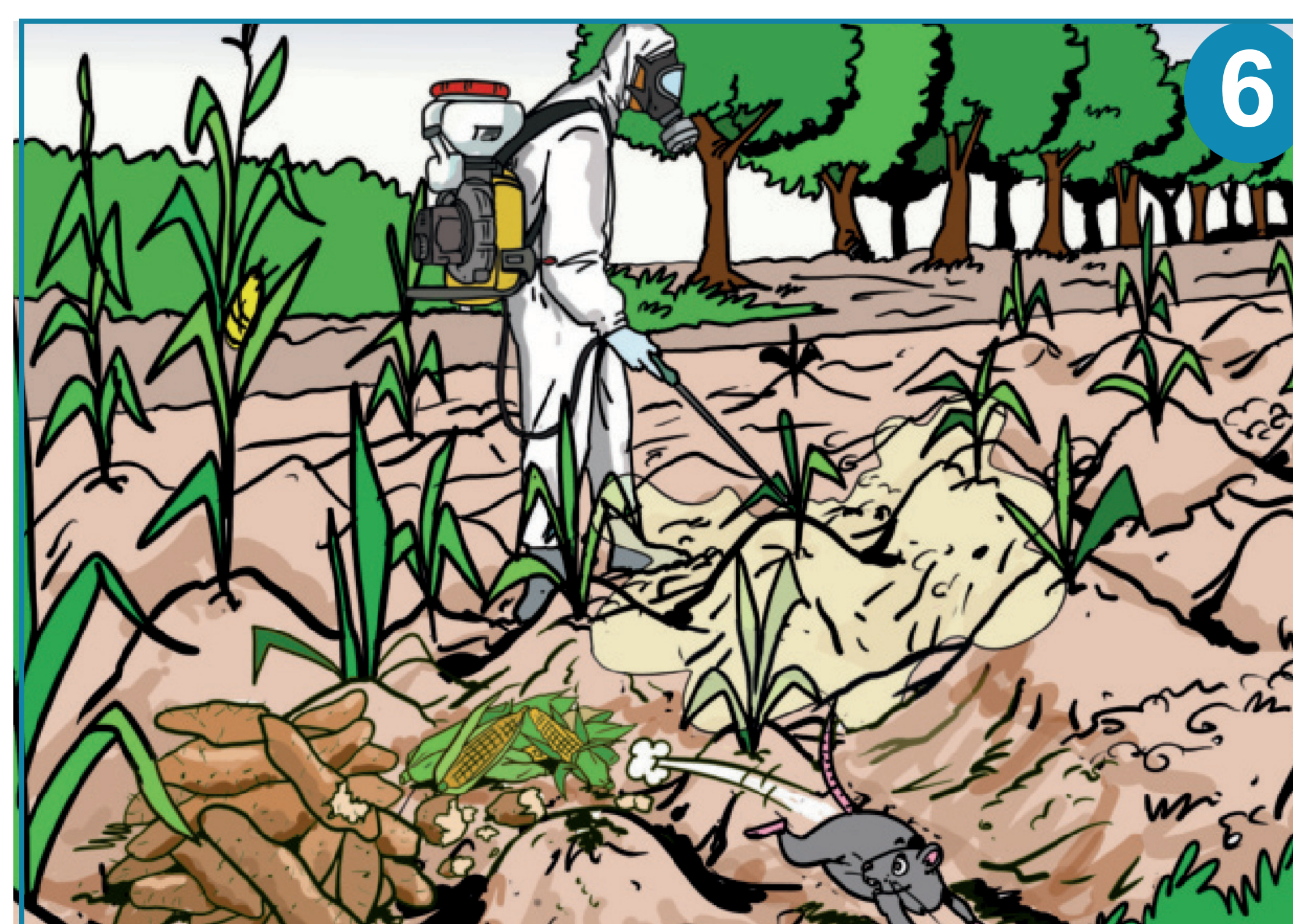
International
COCOA
Initiative

PROTECTING CHILDREN FROM EXPOSURE TO PESTICIDES



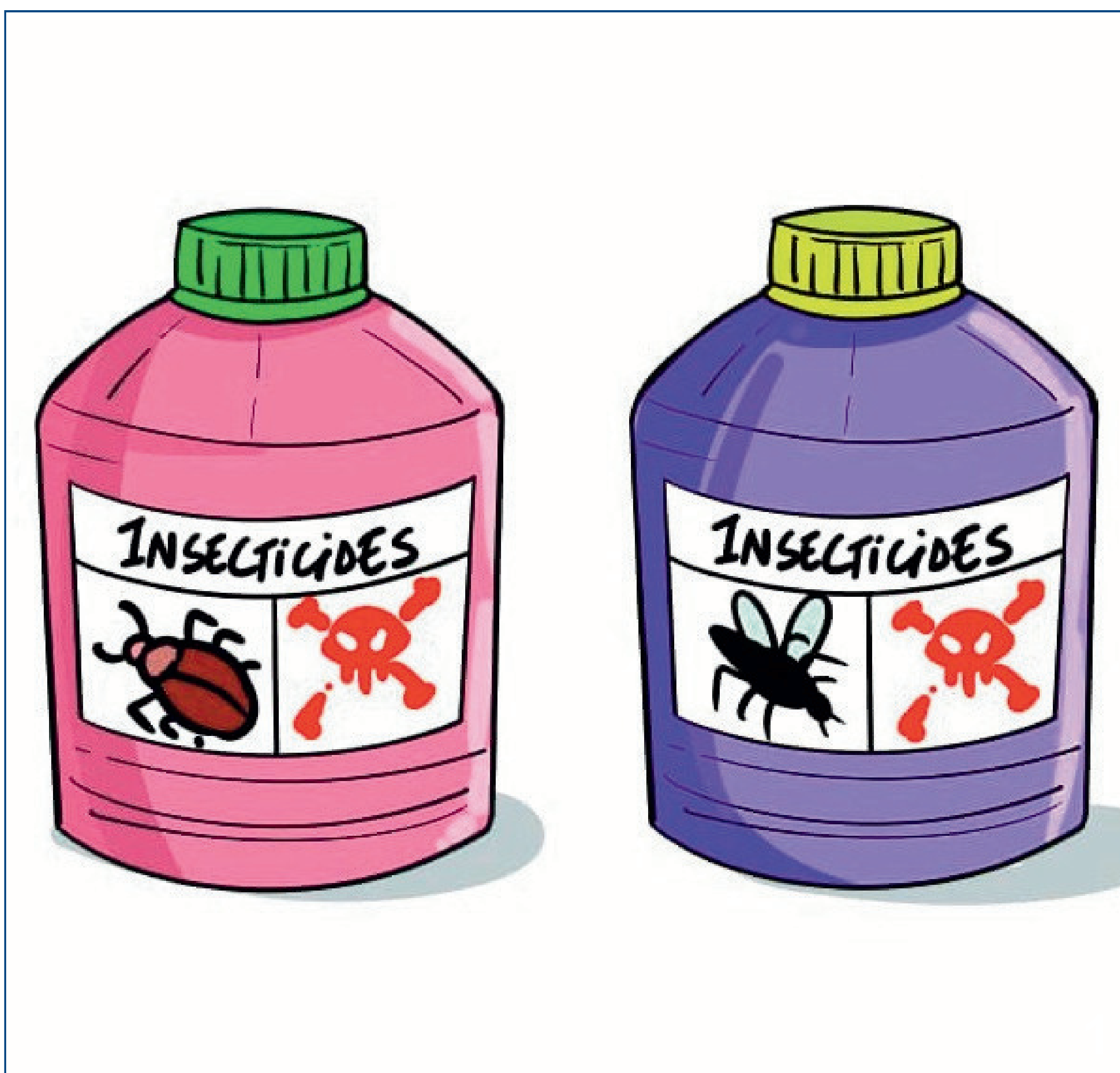
Posters for community training

Different uses of pesticides



1. **Managing agricultural pests**, including protecting crops from pests and weeds
2. **Protecting livestock**, including combating animal diseases
3. **Urban pest management**, including controlling infestations in households and communities
4. **Forestry**, including protecting trees against pests
5. **Crisis management**, including addressing epidemics
6. **Protecting farms after harvest**

Common pesticides used in cocoa



Insecticides



Herbicides (control of weeds)

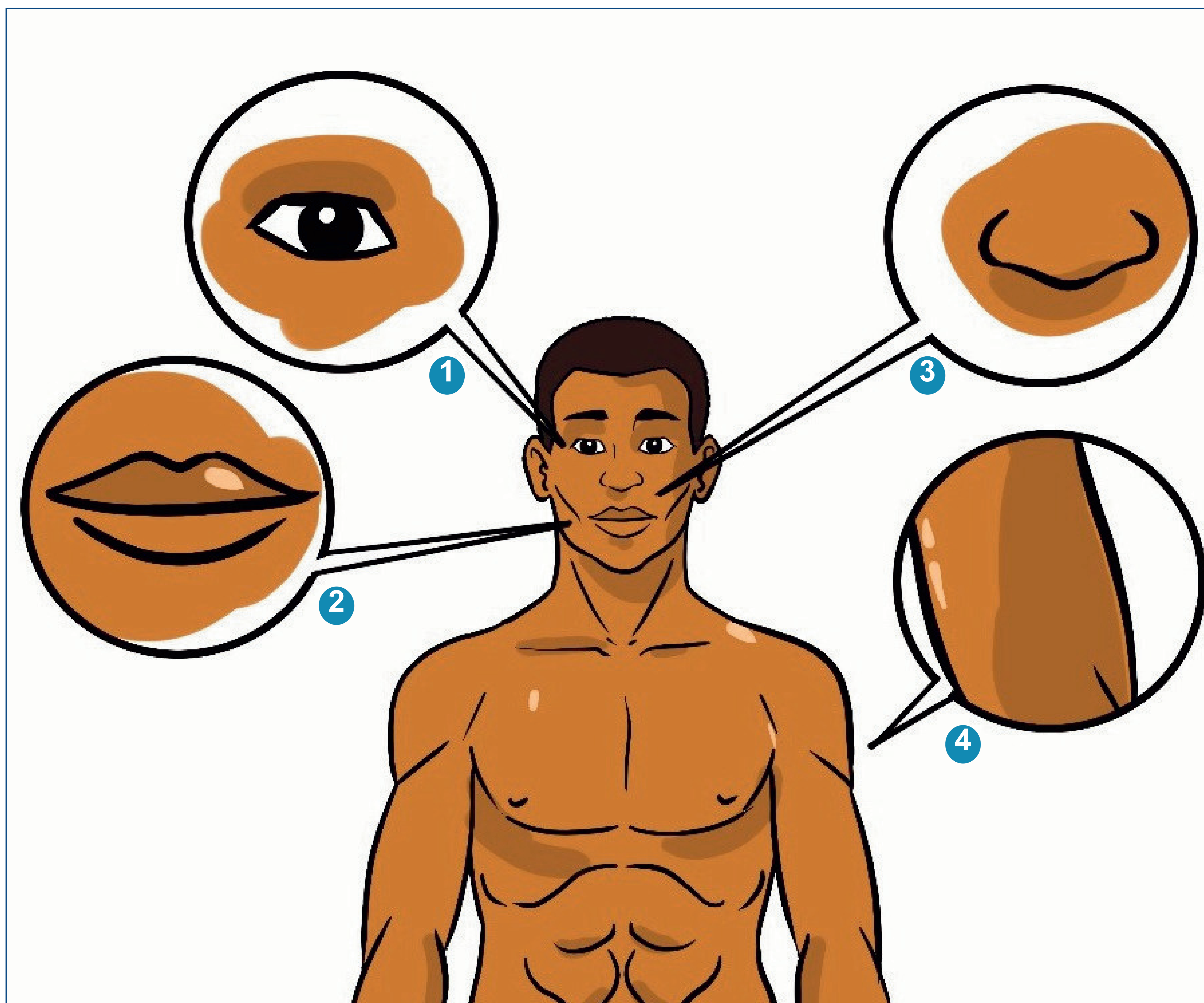


Fungicides (pathogens)



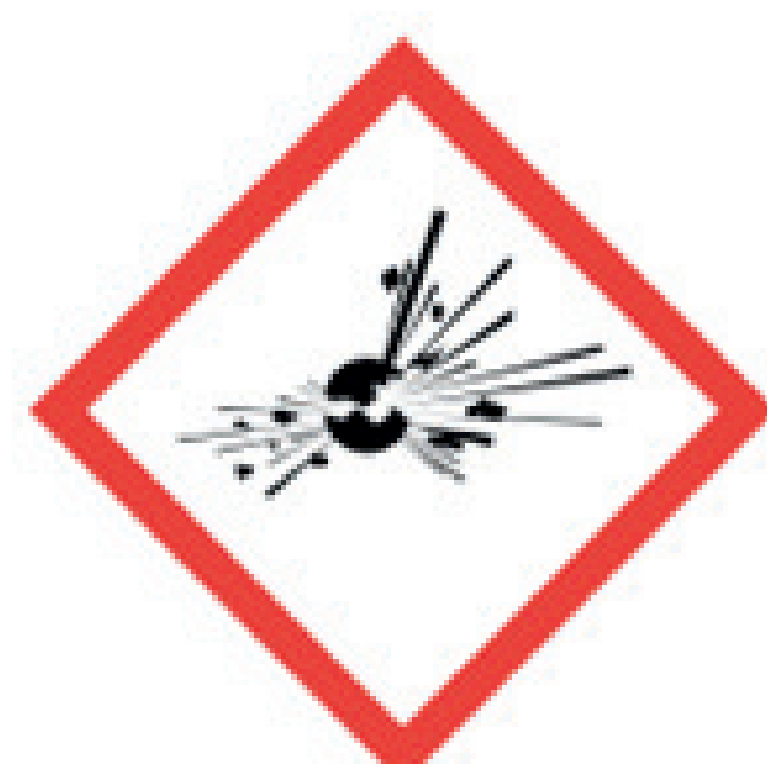
Rodenticides (mice and rats)

How pesticides enter the human body



1. Eyes
2. Ingestion
3. Inhalation
4. Cutaneous

Different hazard warning pictograms



GHS01 Explosive



- Explosives
- Self-Reactives
- Organic Peroxides



GHS05 Corrosive



- Skin Corrosion/
Burns
- Eye Damage
- Corrosive to Metals



GHS04 Compressed Gas

- Gases Under Pressure



GHS08 Health Hazard

- Carcinogen
- Mutagenicity
- Reproductive Toxicity
- Respiratory Sensitizer
- Target Organ Toxicity
- Aspiration Toxicity



GHS07 Harmful

- Irritant (skin and eye)
- Skin Sensitizer
- Acute Toxicity (harmful)
- Narcotic Effects
- Respiratory Tract Irritant
- Hazardous to Ozone Layer (Non-Mandatory)



GHS03 Oxidizing



- Oxidizers



GHS02 Flammable



- Flammables
- Pyrophorics
- Self-Heating
- Emits Flammable Gas
- Self-Reactives
- Organic Peroxides



GHS06 Toxic



- Acute Toxicity (fatal or toxic)



GHS09 Environmental Hazard



- Aquatic Toxicity



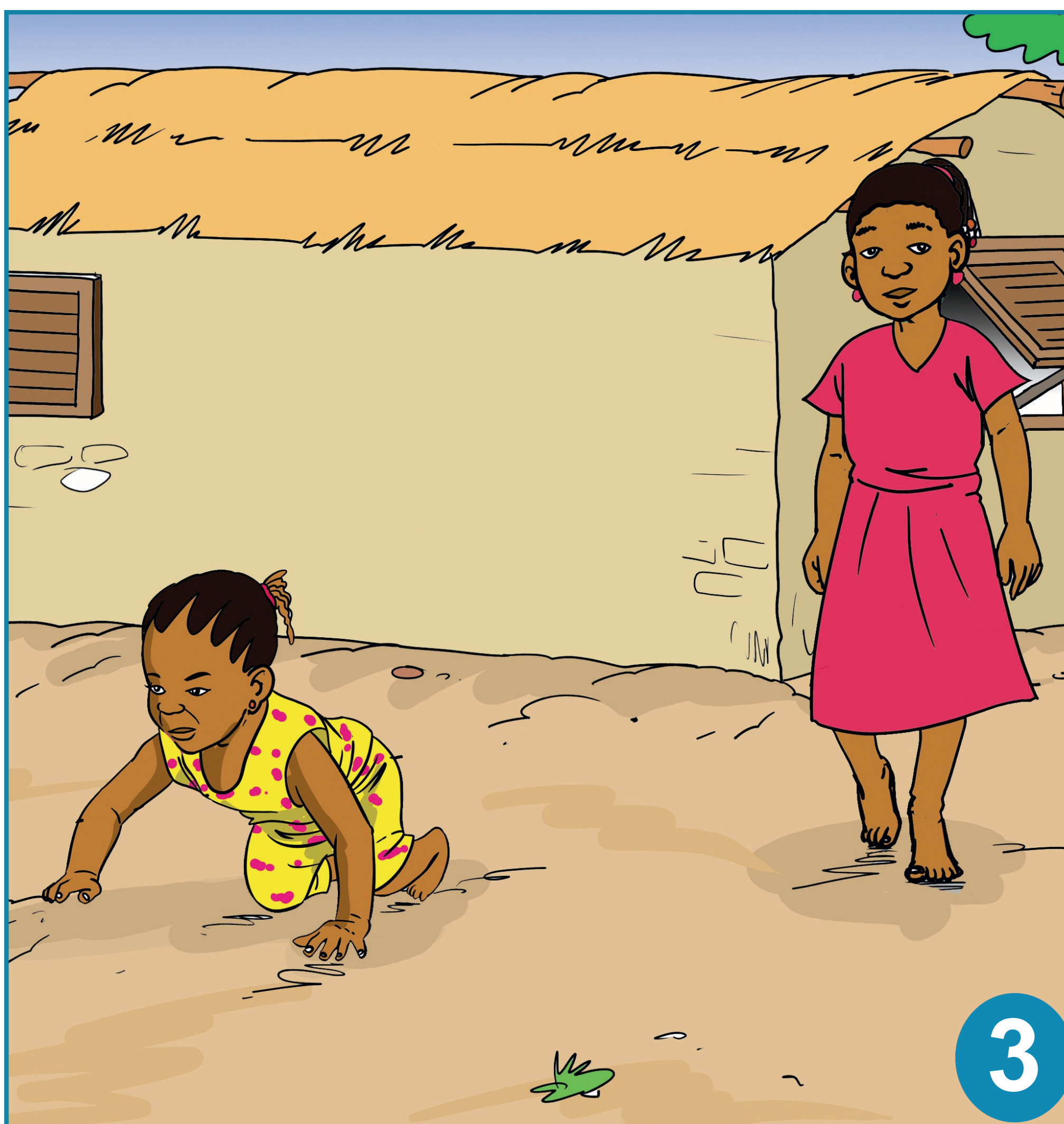
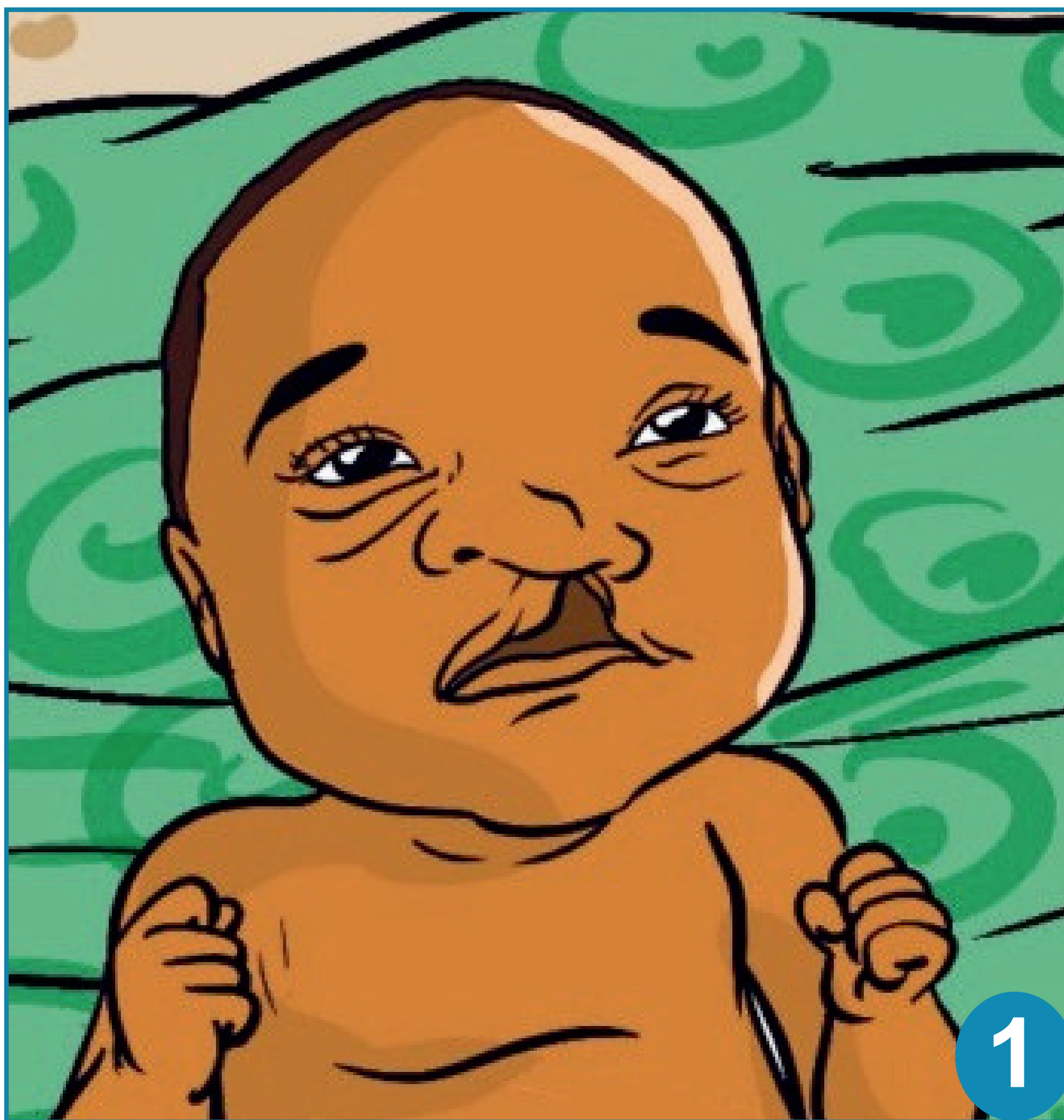
Samples of pesticide labels



- Pesticide name
- Product category
- Active components
- Usage guidelines

- Guidelines for usage
- Caution symbols
- Emergency care instructions

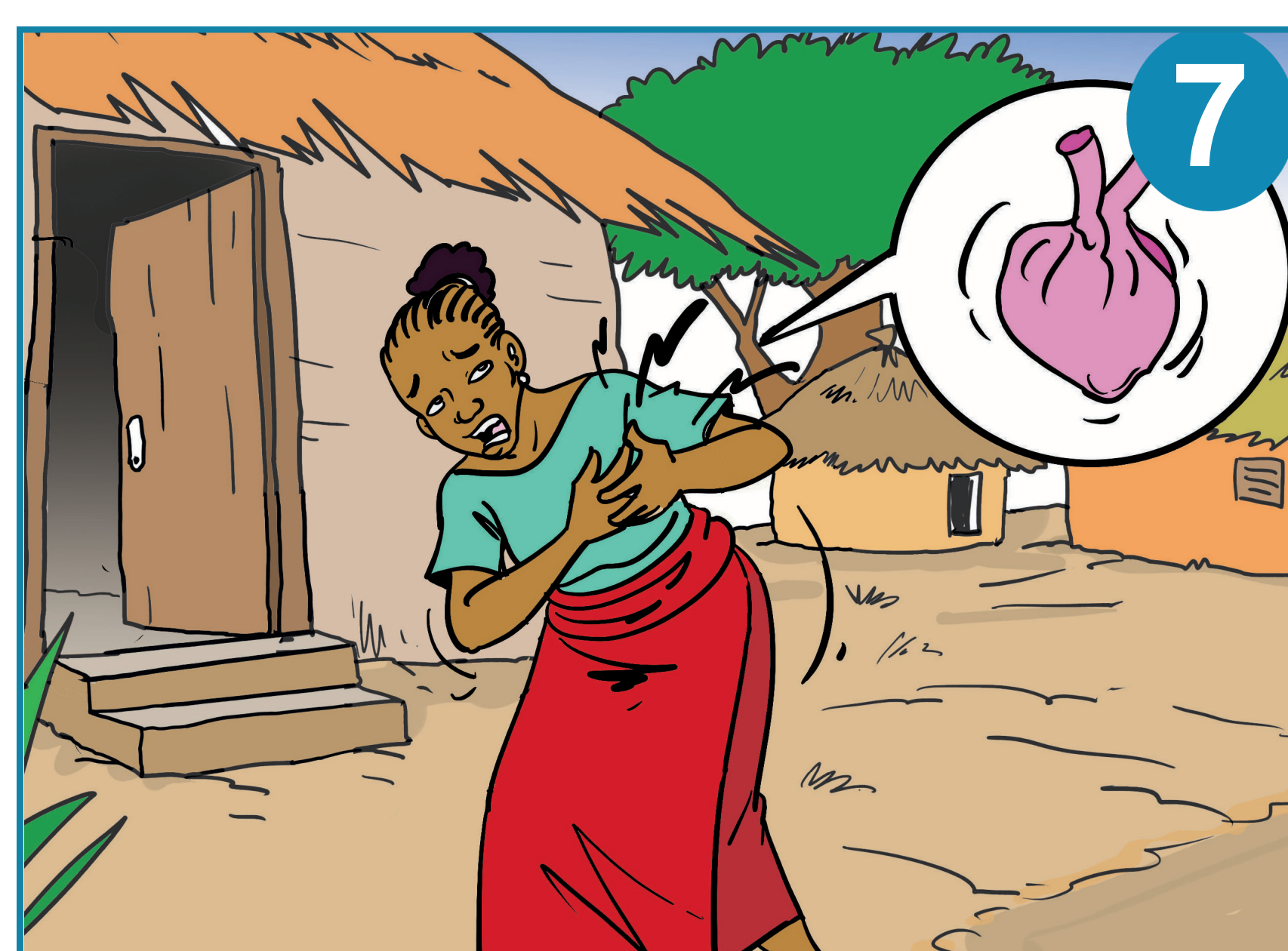
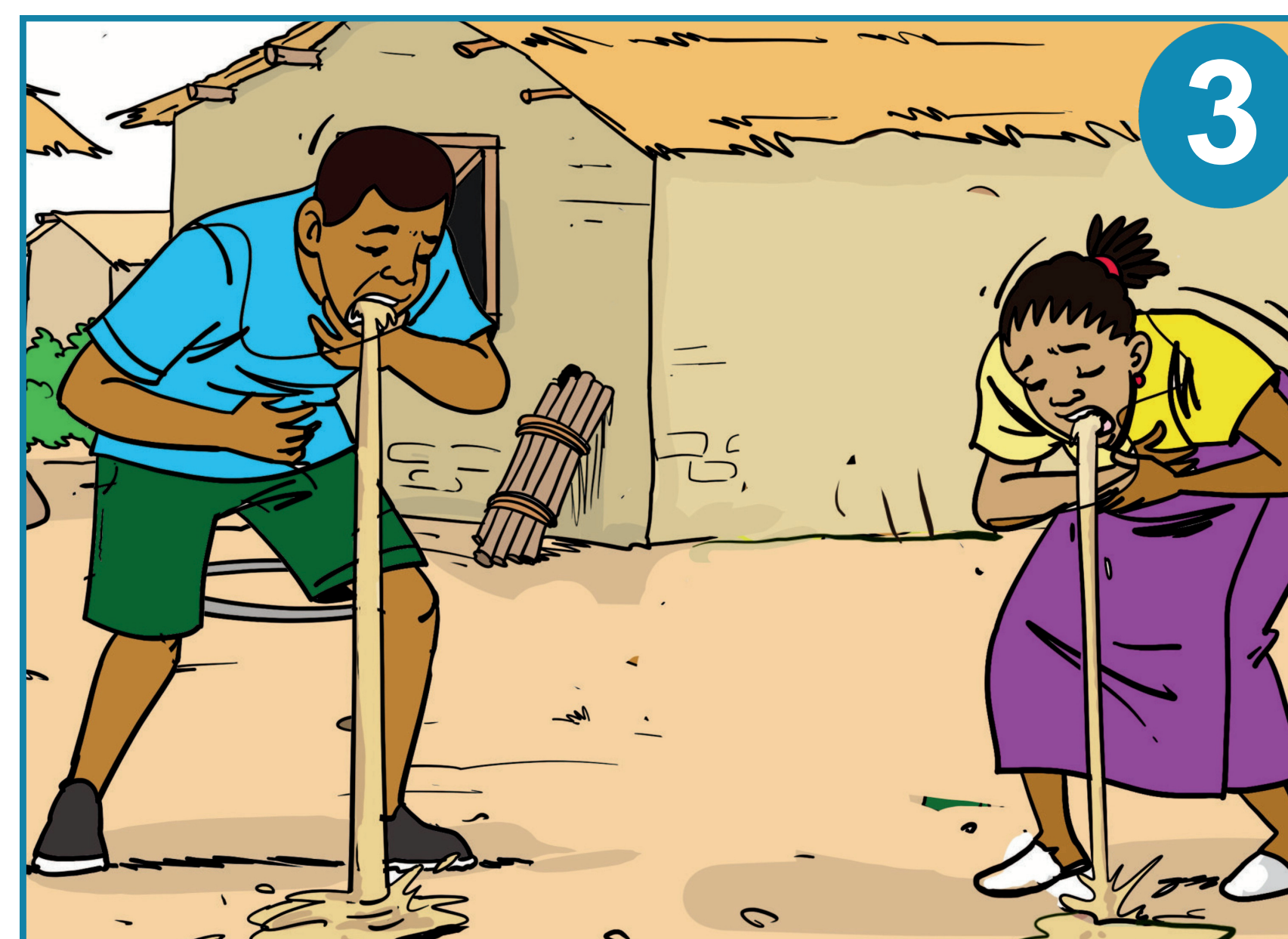
Long-term health effects of pesticide exposure



1. Congenital anomaly;
2. Stunted growth;
3. Developmental lag;
4. Dysfunction of the immune system



Short-term health effects of pesticide exposure



1. Migraine;
2. Lightheadedness or fatigue;
3. Queasiness or emesis;
4. Abdominal pain or loose stools.
5. Eye discomfort or excessive tearing;
6. Respiratory issues, coughing;
7. Abnormal heart rate;
8. Stinging feeling in the mouth, throat, etc.



International
COCOA
Initiative

The most common situations of children's exposure to pesticides



1



2



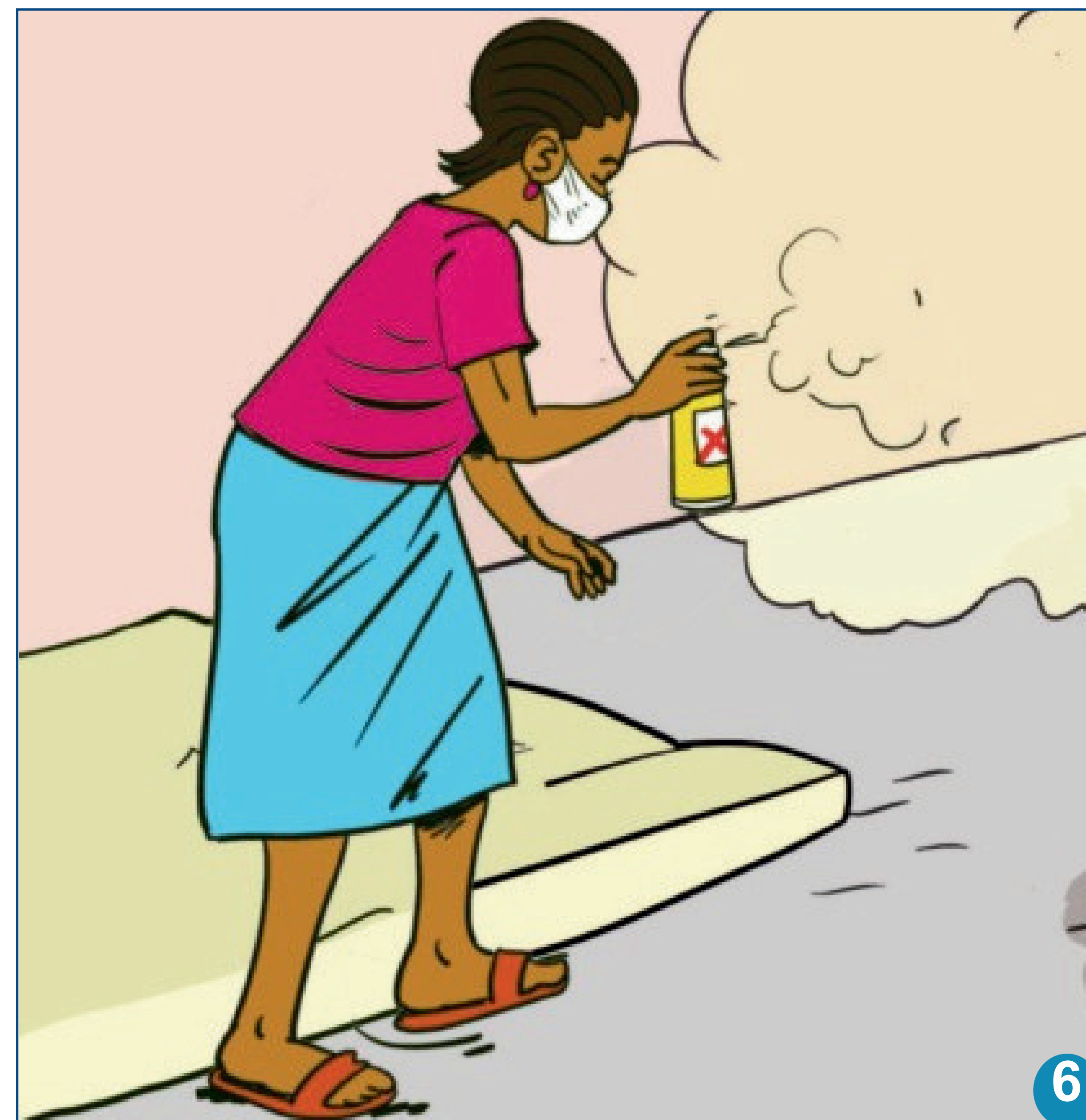
3



4

1. **Surface residue**: boards, furniture designed for infants to touch and explore with their mouths;
2. **Exposure during pregnancy**: fetus indirectly affected by the mother exposed to pesticides
3. **Polluted dust**: pesticides present in dust that infants may inhale while crawling;
4. **Aerial drifts**: particles polluting air, food, etc.

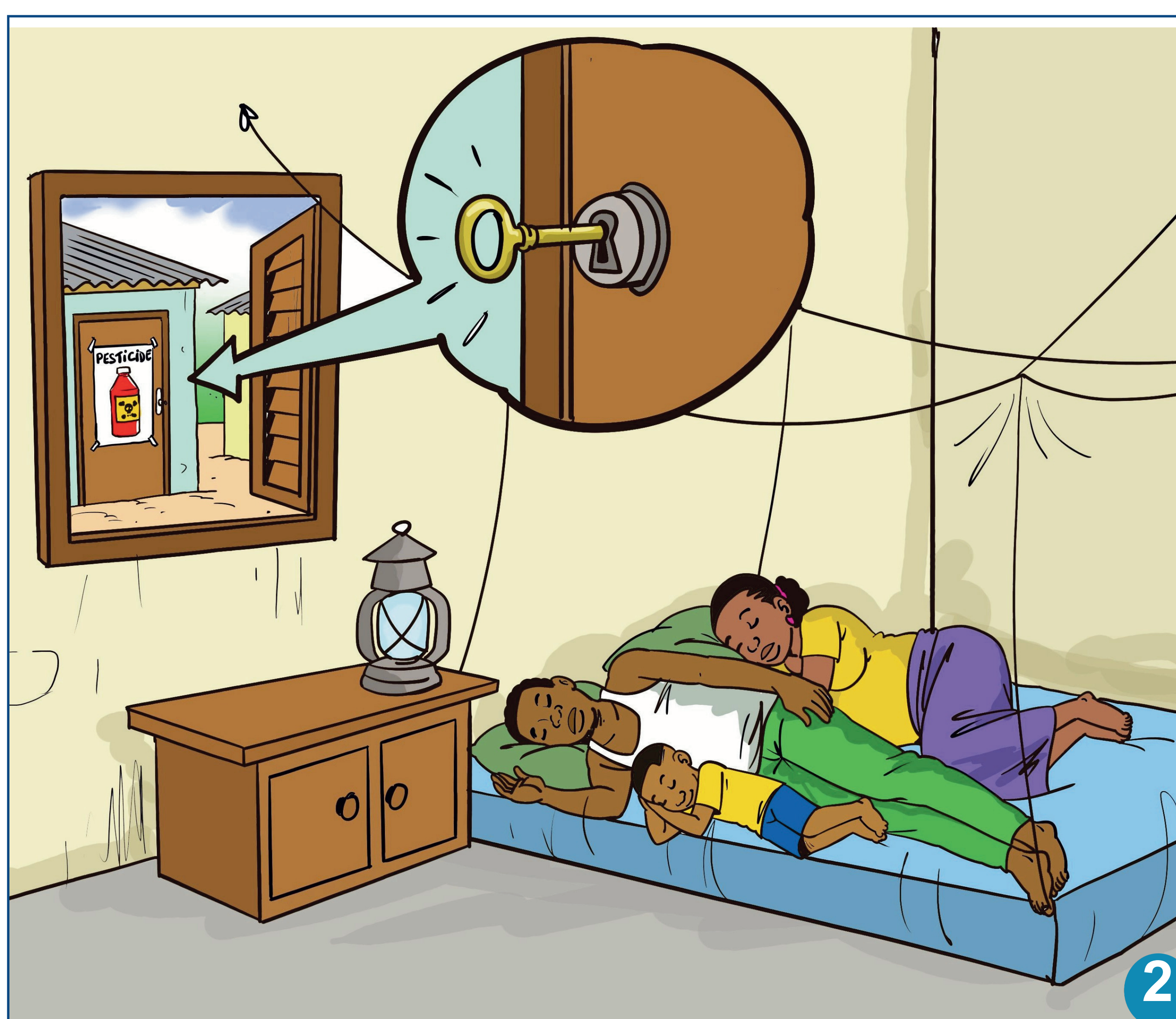
The most common situations of children's exposure to pesticides



- 5. Indirect exposure:** children exposed to pesticides through clothing, footwear, or items;
6. Antiparasitic therapies: spraying puts the child at risk
7. Inadequate storage: Pesticides are released and pollute the environment.



Responsible practices to protect children and pregnant women from pesticide exposure



1. Use suitable protective clothing and equipment when dealing with pesticides.
2. Keep pesticides in a locked storage facility away from living spaces.
3. Clean hands and clothing after working with pesticides.



Responsible practices to protect children and pregnant women from pesticide exposure



4. Steer clear of locations where pesticides are used;
5. Consistently wash vegetables and soak them in salt water to eliminate pesticide residues;
6. Inform teenagers and engage them in safety measures at home.

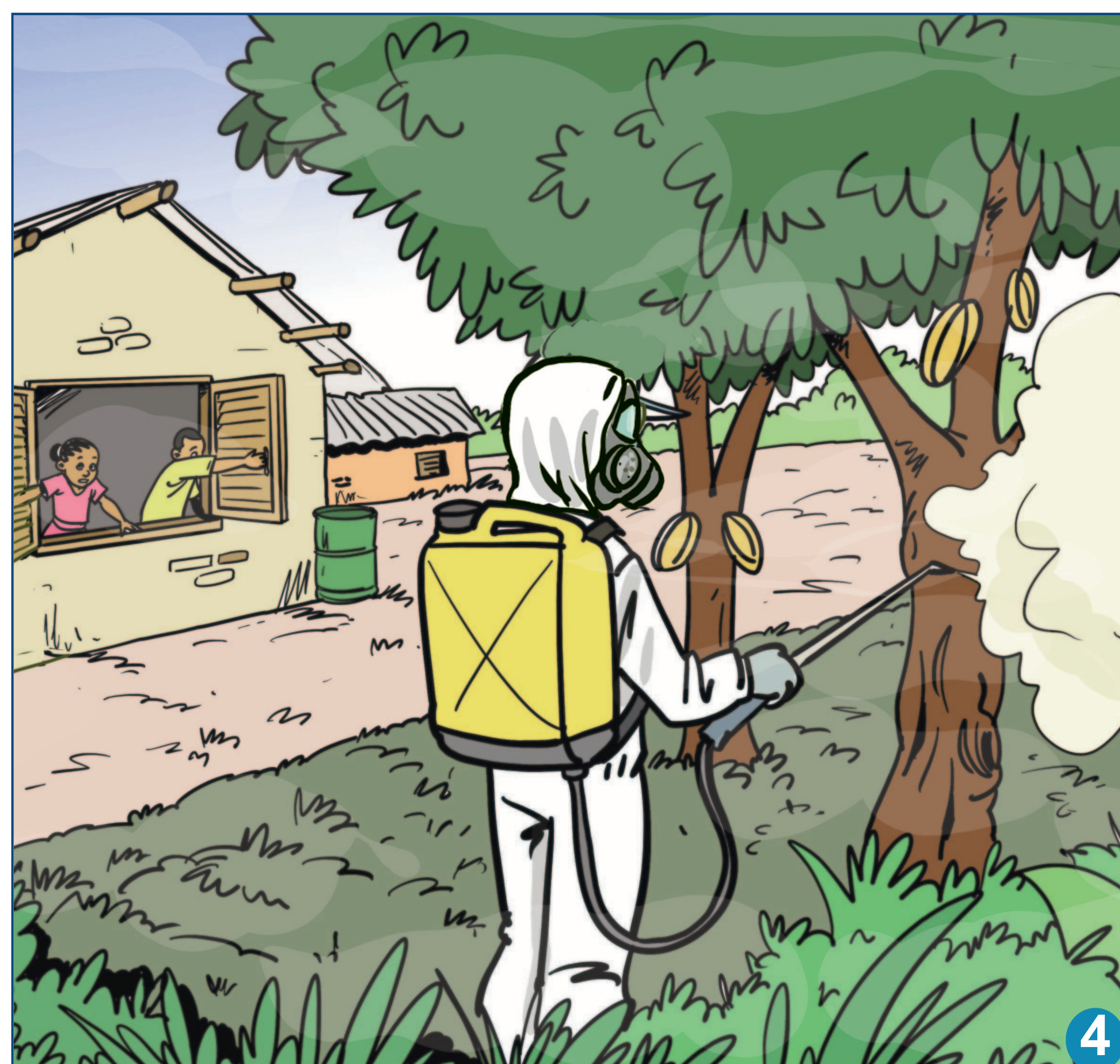


Storage and disposal of pesticides



1. Refrain from using pesticides indoors and ensure that products are stored out of children's reach in a secured area;
2. Arrange for the collection of pesticide packaging by the cooperative or a designated organization.

10 safety rules for your children



Rule 1: I will never handle an empty or full pesticide container.

Rule 2: I must promptly inform an adult if I suspect a pesticide spill or if I am exposed.

Rule 3: I will not engage with spraying equipment; I will remain indoors when pesticides are being applied around the

Rule 4: house;



International
COCOA
Initiative

10 safety rules for your children



Rule 5: I will avoid playing in areas where pesticides have been applied; Rule 6: I will refrain from touching plants that have been treated with pesticides; Rule 7: I will not consume food or beverages near areas where pesticides are utilized; Rule 8: I will wash my hands with soap and water after playing outside or handling treated plants;

10 safety rules for your children



Rule 9: I will pay attention to adults and adhere to safe guidelines concerning pesticides.

Rule 10: I will store all my play items away from pesticides.



International
COCOA
Initiative

This resource was developed by the International Cocoa Initiative and is protected by an Attribution-NonCommercial-Creative Commons license. <https://creativecommons.org/licenses/by-nc/4.0/>

This means you are free to:

- Share — copy and redistribute the material in any medium or format
- Adapt — transform, and build upon the material

Under the following terms:

- Attribution — You must give appropriate credit, provide a link to the license, and indicate if changes were made. You may do so in any reasonable manner, but not in any way that suggests the licensor endorses you or your use.
- NonCommercial — You may not use the material for commercial purposes.